



BA-Nr.: 02.07.147/2023-07-A01



REBOTEC® Rehabilitationsmittel GmbH
DE-49610 Quakenbrück, Artlandstr. 57-59
Telephone: +49 (0) 5431/9416-0
Fax: +49 (0) 5431/9416-66
Web: www.rebotec.de
Email: info@rebotec.de



User Manual

Multifunctional nursing wheelchair

Phoenix		Phoenix
REF	352.xx.10	352.xx.40
	150 kg	150 kg

XX = colour code



Figure similar



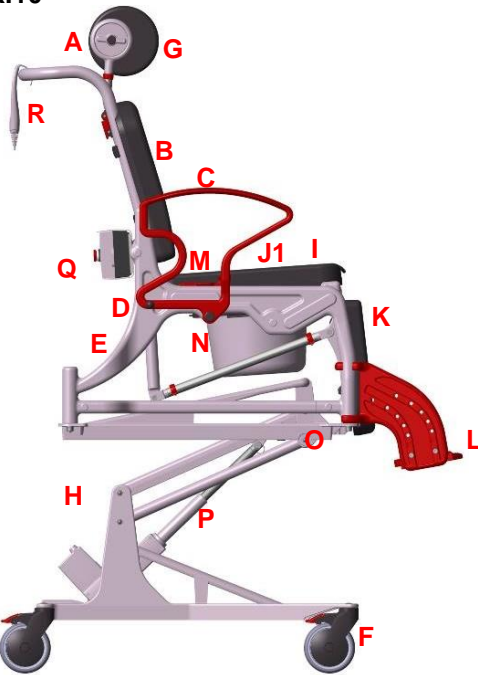
Read this User Manual **before using the product for the first time** and keep it at hand for the user as well as for future use and provide it to the purchaser in the case of subsequent sales.

**Table of contents**

1	Product description	3	10.7	Linear drive	12
1.1	Introduction	3	11	Product information	12
1.2	LINAK assembly instructions	3	12	Operation of the product	12
2	Features	3	12.1	Sitting down	12
2.1	Intended purpose	3	12.2	Getting up	13
2.2	Use	4	12.3	Sitting and lying in the lower position	13
2.3	Storage & transport	4	12.4	Sitting / lying during lifting	13
2.4	Equipment & functions	4	12.5	Removing the seats	14
2.5	Packaging	4	12.6	Folding down the footrests	14
2.6	Disposal	4	12.7	Swivelling down the armrests	14
3	Symbols & nameplates	4	12.8	Removing the footrests	14
3.1	Protection classes	5	12.9	Using the toilet bucket	14
4	Safety instructions	5	12.10	Handling	14
5	Incident reporting	6	13	Troubleshooting	15
6	Warranty	7	13.1	General	15
6.1	Complaints	7	13.2	Drive unit faults	15
7	Reuse, lifetime	7	14	Cleaning & disinfection	15
8	Scope of delivery	7	14.1	General	15
9	Setting up for use	7	14.2	Cleaning	15
9.1	Folding down the footrests	8	14.3	Disinfection	15
9.2	Adjusting the footrest height	8	15	Maintenance	16
9.3	Parking brake operation	8	15.1	Maintenance of the electronic system	16
9.4	Adjusting the headrest	8	Spare parts & accessories	17	
9.5	Adjusting the tilt angle	9	16	Drawing & dimensions	18
9.6	Adjusting the seat height	9			
9.7	Assembly/removal of the safety belt	9			
10	Electronic elements	9			
10.1	Battery	9			
10.2	Wall charger	10			
10.3	Wall charger	10			
10.4	Control unit	11			
10.5	EMERGENCY OFF function	11			
10.6	Manual switch	12			

1 Product description

352.xx.10



352.xx.40

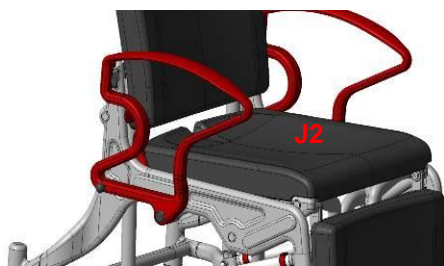


Figure shows:

A	Headrest adjustment
B	PUR backrest cushion
C	Armrest
D	Locking bolts
E	Chair frame with tilt adjustment
F	Wheel insert with parking brake
G	PUR headrest
H	Lifting unit
I	PUR seat, hygiene opening
J1	PUR seat cushion
J2	PUR shower seat, closed
K	PUR leg support
L	Foot support with footrest
M	Locking lever for tilt adjustment
N	Toilet bucket with lid
O	Nameplate
P	Linear drive
Q	Control unit
R	Manual switch

1.1 Introduction

- The product described here is a medical device of risk class I according to **(EU) 2017/745 MDR**.
- In this user manual, you will find information on the safe and proper initial operation, use, maintenance and care of this product.
- Read this manual carefully before using this product. Follow the safety instructions and act accordingly.

1.2 LINAK assembly instructions

- The assembly instructions for the LINAK GmbH electronic drive unit are also applicable. The assembly instructions can be downloaded at www.linak.de. It is also possible to print the information and read it when needed.
- The names listed in the table lead to the corresponding documents via the search function on the website.

REBOTEC name	LINAK name
Linear drive	Actuator LA31
Manual switch	Manual controller HB30
Battery	Battery module BAJ1
Control unit	Power supply CBJ2
Wall charger	Wall loader CHJ2

2 Features

- This product is designed for people with adult body proportions. They should weigh
 - 40 to 150 kg in the Phoenix
 - and be at least 146 cm tall.

2.1 Intended purpose

352.xx.10

- The product is intended for the care of patients with limited ability to stand and/or walk. It facilitates showering while sitting or lying down, as well as going to the toilet, even if a conventional toilet or bathroom is out of reach.
- It can be smoothly and variably adjusted between sitting and lying positions. It is also electrically height-adjustable. The patient must have sufficient sitting ability and upper body musculature. If necessary, a nurse must be present during use.
- The product is not intended for prolonged sitting or transfer.

Phoenix 352.xx.40

- The product is intended for the care of patients with limited ability to stand and/or walk. It facilitates

showering while sitting or lying down. It can be smoothly and variably adjusted between sitting and lying positions.

- It is also electrically height-adjustable. The patient must have sufficient sitting ability and upper body musculature. If necessary, a nurse must be present during use.
- The product is not intended for prolonged sitting or transfer.

Specification:

- Maximum user weight: 150 kg
- Height-adjustable footrests
- Wheelchair, 4 swivel castors, lockable
- Indoor use

Indication

- Use in domestic and inpatient settings.
- Medical condition of the patient:
 - The use of a chair by patients with cognitive disorders (reduced mental, physical, sensory or intellectual abilities) must be decided in advance by a medical decision (prescription of the product) or on site by nursing personnel.

2.2 Use

- Temperature range: 5 °C to +35 °C; direct radiant heat on the product must be avoided.
- Relative humidity: 40% to 75%. Outside of these conditions, the product must only be used for a short time.
- The product is not suitable for use in swimming pools or saunas, as surface discolouration and limitations of mechanical strength may occur.
- This product may not be used to transport heavy objects.
- There must be a level parking area of sufficient size. See 16.

2.3 Storage & transport

- Temperature range: 5 °C to +25 °C; direct radiant heat on the product must be avoided.
- Store the product in dry rooms with a humidity of up to 65%.

2.4 Equipment & functions

- The chairs consist of a plastic frame on 4x5" swivel castors with locking brake. The armrests can be swivelled and have an armrest locking device.
- The footrests are height-adjustable and can be removed or folded down. The headrest is height-

adjustable and rotatable. A tilt adjustment of the chair, via a lever function, for the supine position of the patient

- Depending on the equipment variant, there is a PUR seat for transport purposes or a PUR seat with hygiene cut-out (incl. toilet bucket with lid).
- Due to the design and intended use of the product, disassembly for transport or storage is not intended or necessary.
- The product is electrically height-adjustable.

2.5 Packaging

- We recommend you keep the packaging for later transport.
- Dimensions: 1003 mm x 710 mm x 1080 mm

2.6 Disposal

- Disposal and recycling of used products and packaging must be carried out in accordance with currently valid regulations. Please contact a disposal company for further information.
- The Infection Protection Act must be observed.
- Please observe any labels and information on packaging material and act accordingly.

3 Symbols & nameplates

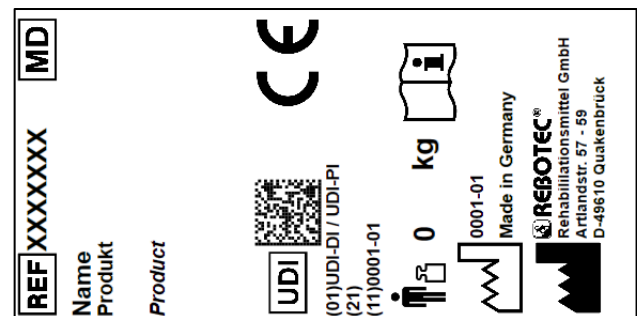


Figure similar.

The nameplate must not be removed! For ordering spare parts and processing complaints, the device name, serial number and year of manufacture will be required.

Symbol	Meaning	Symbol	Meaning
	Read the manual!		Year of manufacture of product
SN	Serial number		Important information!
REF	Product number		Maximum user weight in kg

Symbol	Meaning	Symbol	Meaning
	Care instructions		Maintenance instructions
	Applicable for indoor use only.		Manufacturer
	Visual signal		Language
	Read the User Manual!		Do not dispose of as household waste.
	The product complies with (EU) 2017/745 MDR		
	Caution! Observe the safety instructions		
	Unique Device Identifier (Data: GTIN / LOT (SN) / year of manufacture)		
	Medical device label This product is a medical device.		

3.1 Protection classes

Digit 1:

No.	Meaning
X	Not specified
0	No protection
1	Protected against solid foreign bodies with a diameter ≥ 50 mm
2	Protected against solid foreign bodies with a diameter ≥ 12.5 mm
3	Protected against solid foreign bodies with a diameter ≥ 2.5 mm
4	Protected against solid foreign bodies with a diameter ≥ 1.0 mm
5	Protected against dust in harmful quantities
6	Dust-tight

Digit 2:

No.	Meaning
X	Not specified
0	No protection
1	Protection against vertically falling drops of water
2	Protection against vertically falling drops of water when the enclosure is tilted up to 15°
3	Protection against water falling as a spray at any angle up to 60° from the vertical
4	Protection against water splashed from any direction
5	Protection against water jets (nozzle) from any angle
6	Protection against powerful water jets

No.	Meaning
7	Protection against temporary immersion
8	Protection against continuous immersion
9	Protection against water from high-pressure/steam jet cleaning



Keep the product clean and clean it regularly. Special attention must be paid to hygiene in the sensitive areas.

In order to guarantee the protection categories, all electrical components must be interconnected and none of the connections (C) may be left open.

Letters:

Letter	Meaning
A	Protected against access to hazardous active parts with the back of a hand.
B	Protected against access to hazardous active parts with a finger.
C	Protected against access to hazardous active parts with a tool.
D	Protected against access to hazardous active parts with a wire
H	High-voltage equipment.
M	Tested when moving parts are active.
S	Tested when moving parts are standing still.
W	Tested under defined weather conditions.

4 Safety instructions



Please observe the following safety instructions:

- Before using the product for the first time, the User Manual must be read completely in order to avoid hazards or damage caused by maloperation.
- Before every commissioning, check whether there is any visible damage to the product.
- In case of malfunction or damage of any kind, the product must not be used.
- Do not leave the patient unattended during use.
- Do not leave children unattended with the product.

Caution: Danger of falling!

- The product should be used with the help of a trained caregiver, depending on the patient's condition.
- When adjusting the backrest, the patient should hold on to the armrests.
- Patients who are prone to uncontrolled actions or movements must be supervised when using the chair.

- The chair may **only** be moved on a slope or incline with the help of a caregiver. Generally, on an uphill slope the chair should be pushed forward and on a downhill slope it should be pulled backward.

Caution: Danger of slipping!

- Before use, check that the seat surfaces are firmly clamped in the seat frame.
- Always lock **at least** 2 parking brakes on the wheels before using the chair to prevent the chair from rolling away.
- When sitting down, do not sit on the front edge of the seat or on the seat cushion; the user should take up the entire seat surface.

Caution: Danger of tipping over!

- The chair must only be used with the armrests locked in place when sitting, moving about and/or adjusting the tilt angle.
- The product may only be pushed by the push handle.
- The footrests must be swung down or folded up before sitting down and standing up. Do not stand on the footrests!
- **Do not** move the chair against door thresholds, edges or other uneven surfaces
- **Only** use the product indoors and on flat, skid-proof surfaces.
- **Only** move the product at a moderate pace.
- Persons must only be transported in an upright sitting position.
- Never lean out of the chair. If the swivel castors are in an unfavourable position (pointing inwards), the chair's stability is limited.
- Special care must be taken when moving the chair in a tilted position!

Caution: Danger of breakage!

- The chair is **only** suitable for its intended use. Note the maximum user weight allowed. See 2.
- Do not expose the product to strong temperature fluctuations (2.2 & 2.3).

Caution: Danger of pinching or catching!

- Do not leave the patient unattended during use.
- When folding the armrests up or down, do not reach into the joint guide to avoid any trapping of body parts etc. in them. Do not put any body parts into the armrests.
- To prevent body parts from becoming trapped, do not grip between the seat plate and the frame

when pressing on the seat plate or adjusting the tilt adjustment.

- When folding down the footrests, take care to avoid trapping any body parts. Do not insert any body parts into the cut-out in the heel area.
- When adjusting the headrest, make sure that no parts of the body or any objects are trapped. Do not place any parts of the body between the backrest and headrest.
- When pulling out and pushing in the toilet bucket, there is a risk of soft parts of the patient being trapped. To prevent injuries, the bucket may only be pulled out or pushed in when no user is sitting in the chair.
- When operating the lift mechanism, observe the warnings on the equipment (lift unit). The lifting unit consists of parts which are movable relative to one another and which, if used improperly, present a risk of crushing.
- Therefore, keep hands and feet away from clamping points and do not reach into the lifting unit when lifting and lowering the chair.

Caution: Risk of injury!

- There is a risk of injury with surface temperatures > 40 °C. Therefore, do not expose the product to high temperatures (e.g. sunlight, radiators, hot water). Allow the product to cool down before use.



If the product is used by patients with insensitive skin (no temperature perception or skin damage), a heat check (e.g. touching with the back of the hand) must be carried out by the nursing staff.

- Make sure that no third person and/or objects are in the danger area when lifting or lowering the lifting unit.
- Secure stability must be ensured before the chair is used and the lifting unit is used.
- Pay attention to the maximum body weight, as the chair is designed only for this maximum load.
- Please also observe the safety instructions in the LINAK GmbH assembly instructions 1.2)

5 Incident reporting

- Serious incidents related to the product must be reported immediately to the manufacturer and the competent authority.
 - Use the reporting functions and provided forms.
- Manufacturer: pms@rebotec.de

6 Warranty

- The manufacturer grants a warranty of 12 months for this product. The prerequisites are the general terms and conditions (www.rebotec.de/agbs), as well as the intended use. The statutory warranty provisions shall apply.
- Unauthorised modifications to this product will void the product's conformity and the warranty.

6.1 Complaints

- Please contact us before returning the product.
- To reduce transport damage, use the original packaging if possible.
- The Infection Protection Act must be complied with.
 - Please make sure that the product does not pose a risk of infection when returned.
 - Enclose the information sheet on safety with the product. Costs may be incurred for returns that are not marked as harmless.

7 Reuse, lifetime

- The product is suitable for reuse. How often the product can be reused depends on the frequency and nature of use.
- Before reuse, the product must be reprocessed hygienically and the technical and functional safety and reliability of the product must be checked and restored if necessary. See Fehler! Verweisquelle konnte nicht gefunden werden..
 - For more detailed information, please see the reprocessing instructions (02.12.158) and the maintenance instructions (02.11.151).
 - The documents can be downloaded from the following link.
 - www.rebotec.de/downloads
- When used as intended, the product has a lifetime of 5 years. The effective lifetime may vary depending on the frequency and intensity of use and the general condition. A longer service life is possible with a lower intensity of use.
- The batteries have a service life of 4 years, depending on the intensity of use and the general handling.

8 Scope of delivery

- 1x multi-function carer wheelchair
 - 1x headrest, standard

- 1x Safety belt
- 1x AC battery
- 1x wall charger
- 1x user manual (02.07.147)
- The reprocessing and maintenance instructions can be ordered or viewed and downloaded at www.rebotec.de/downloads.

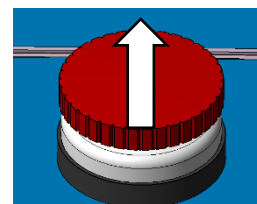
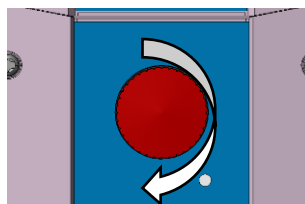
9 Setting up for use

- The product has been carefully inspected in the factory for freedom from defects and completeness. Please check the product for any possible damage which may have occurred during transport and for completeness of the scope of delivery upon receipt.
- The product is delivered fully assembled in the cardboard box. The chair must be inspected for any transport damage before it is put into service. Chair adjustments should **only** be made by qualified personnel.
- Before the batteries are used for the first time, they must be charged for 24 hours in order to achieve perfect functioning and extended the service life.



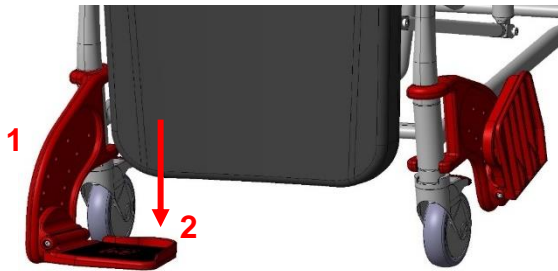
Attention!

- All cables must be routed in such a way as to prevent them from becoming a tripping hazard and posing a risk of injury or damage to the cables during use. It is important to remove the protective sheaths from the cables before use.
- The **EMERGENCY STOP button** may need to be disabled before commissioning. To do this, turn the button clockwise (direction of arrow) until it unlocks.



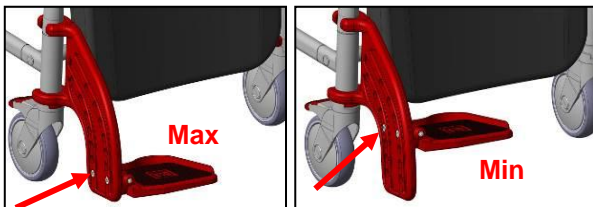
9.1 Folding down the footrests

- Turn (1) the footrests forwards until they engage automatically. Fold (2) the footrests down. Adjust the height of the footrests if necessary.



9.2 Adjusting the footrest height

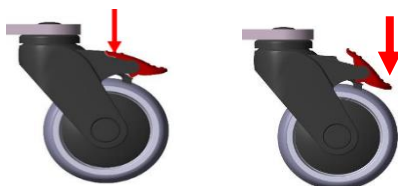
- The footrest height can be adjusted in 4 positions.



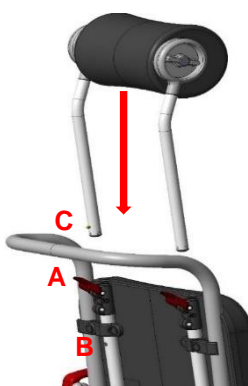
Loosen and remove the screws on the side of the footrest using an Allen key (SW 5). Select the appropriate height (1-4) and screw the footrest back in place. Make sure that the screws are firmly tightened!

9.3 Parking brake operation

- With your foot, press down the parking brake lever. The wheel is now braked and fixed in its direction. The wheel is released by lifting the actuating lever with the foot



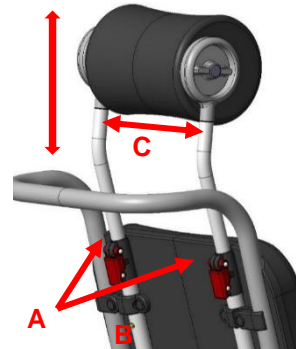
9.4 Adjusting the headrest



- Fold the levers (A) upwards and insert the tubes of the headrest unit into the openings.
- Slide the tubes until the push-button (C) snaps into the hole (B).
- Then push the push-button (C) all the way in and push the tubes to the end

stop and fold the levers (A) all the way down.

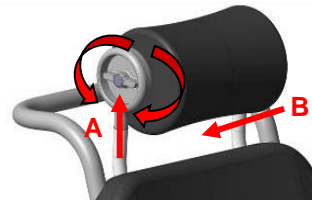
- To adjust the headrest height, fold up the two levers (A) and slide the headrest to the appropriate height



- The headrest can be continuously and variably adjusted (approx. 120 mm) until the push button (B) snaps into the hole (end position).

• After adjustment is completed, fold the two levers (A) all the way down again. Removing the clips (C) allows for the removal of the headrest for cleaning or its replacement.

- You can adjust the inclination of the headrest by turning the rotary head (A).

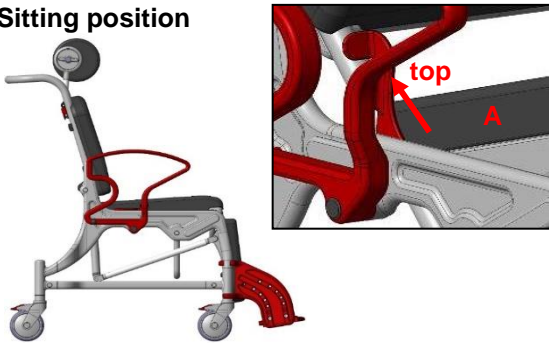


Attention! Danger of crushing (B) of body parts between the headrest and back pad.

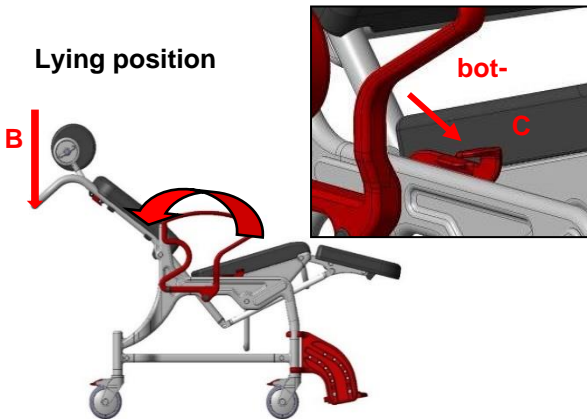
9.5 Adjusting the tilt angle

- The backrest can be smoothly and variably tilted backwards by approx. 37° and the seat surface can be adjusted by 12°.
- Pull the locking lever (A) vertically upwards and then press down on the backrest (B) to the desired position.
- Push the locking lever (C) all the way down again.

Sitting position



Lying position

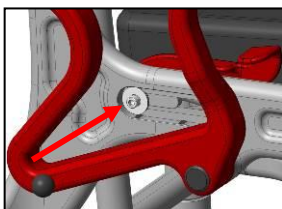


Maintenance instructions



If the locking lever is too stiff or too loose, the clamping effect can be readjusted.

- Remove the cover. The clamping effect of the lever is increased by turning to the right using an Allen key (SW5) and reduced by turning to the left. Then press the cover firmly back on and lock the armrest into place.

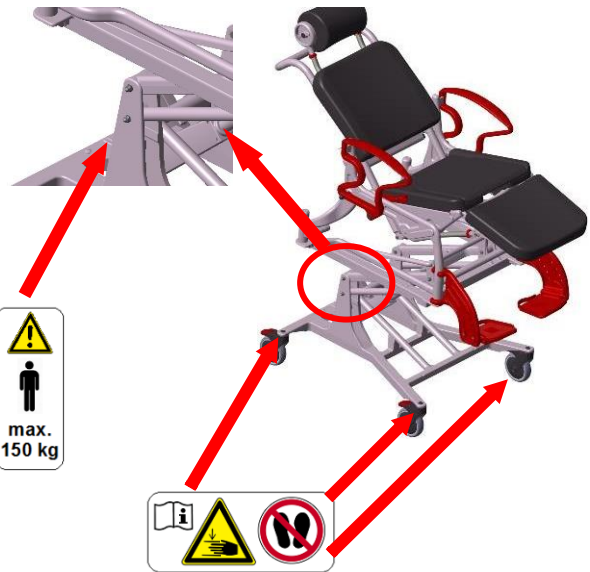


9.6 Adjusting the seat height

- The seat height of the chair can be raised smoothly and variably by the electric drive by actuating the manual switch. The patient can be lifted up to a maximum of 400 mm.



Observe the warnings!



9.7 Assembly/removal of the safety belt

- The product is delivered with the safety belt already fitted. To remove it, fold the armrests away as described in point and pull the loops down from the armrest lock.
- When reinstalling, ensure that the belt is not twisted.

10 Electronic elements




Observe the safety instructions

- Determine if the connection cable or connector is damaged. Do not use damaged cables or plugs.
- **Pay attention to the power supply voltage (100-240 V / 50/60 Hz) and corresponding power supply fuse protection for the charging unit.**
- The control unit and the battery unit must not be opened under any circumstances.
- **The chair must not be operated during the charging process!**

10.1 Battery

- The product is delivered with 2 batteries included. They have already been slightly pre-charged. Nevertheless, the batteries must be charged in the wall-mounted charger for 24 hours before commissioning.

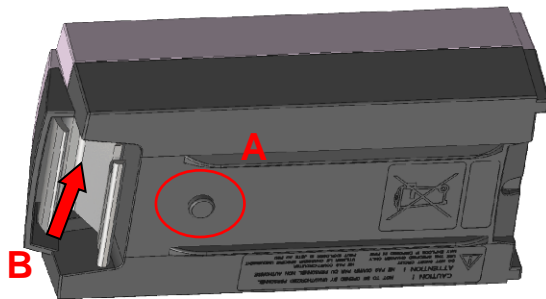
- If the raising/lowering of the chair is noticeably slower, the battery capacity is too low.

 *Charge the empty battery as soon as possible! This extends the service life of the batteries. Batteries that have not been used for a long time should be recharged every 3 months to avoid deep discharges, as these damage the battery in the long run. For information on service life, see 7.*



Attention!

- Check at regular intervals that the ventilation opening (A) is in working order. Because of the construction of the ventilation line, battery gases can escape, but water cannot penetrate.



- The battery is removable for charging, or replacement. To this end, the batteries are equipped with a snap lock (B).
- When attaching, make sure the snap lock is engaged before releasing the battery.

10.2 Wall charger

- The supplied wall charger has two LEDs. These indicate the charge level and the power supply.

Display

LED 1 'ON'-off:

- The power cord is not plugged into the wall outlet. No power supply.

LED 1 'ON'- green:

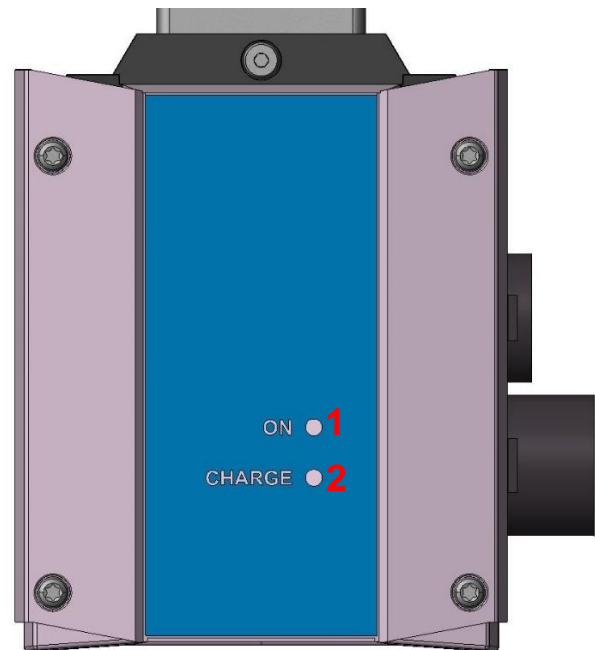
- If the LED is green, the wall charger is ready for use.

LED 2 'CHARGE'-off:

- There is no battery in the charger or the battery is fully charged.


LED 2 'CHARGE'- orange:

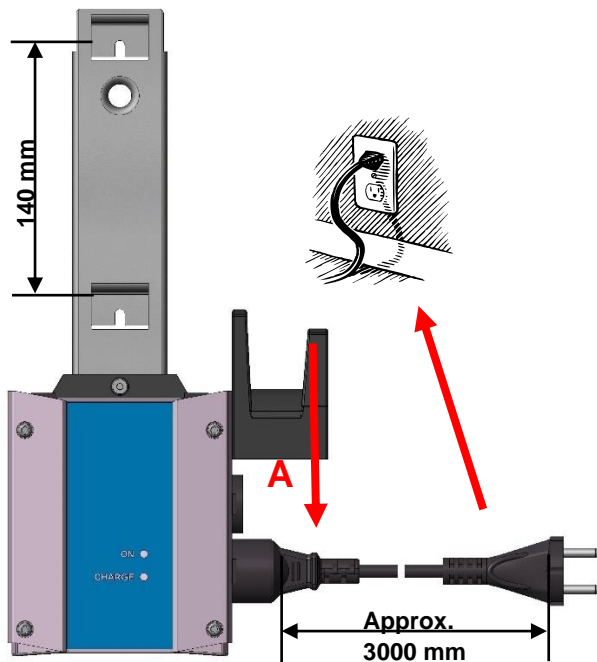
- If the LED is orange, the wall charger is charging the battery.




10.3 Wall charger

- The wall charger is vertically suspended from the 2 grooves in the mounting plate of the charger. The hole spacing is 140 mm. Make sure you select the appropriate screw connection to match the type of wall to which the wall charger will be mounted.
- Be careful not to damage any cables in the wall during installation.
- **REBOTEC** is not liable for any damage resulting from the installation of the charger on the wall. Before attaching, make sure that the power cord length (approx. 3 m) is sufficient.

 *The weight of the wall charger and battery is about 4 kg*




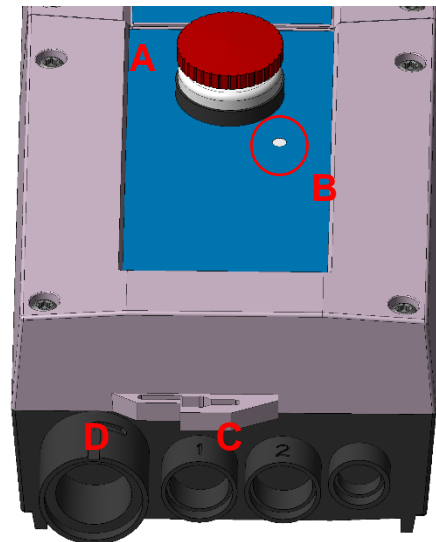
 The wall charger has an idle power consumption (without charging a battery) of 1.3 watts. To save power, unplug the mains plug after each charging operation.

- After installing the charger, slide the cap (A) over the cable. The wall charger is now ready for use.
- The charging process can take up to **4 hours** depending on the state of charge of the batteries. The duration of the charging process depends on the mains supply voltage. If the charging process takes longer than 6 hours (at 230 V mains supply voltage), the battery or wall charger is defective.

10.4 Control unit

- The control unit is equipped with an EMERGENCY STOP function (A) and an emergency electrical lowering. In an emergency, the system can thus be switched off via the emergency stop switch or the linear drive can be retracted via the emergency lowering function.
- To activate the emergency lowering function, press the button with a pen (e.g. ballpoint pen) in area B.

 To ensure the protection classes (IPX5 & IPX6), all electrical components must be interconnected and none of the connections (C) must be left open.

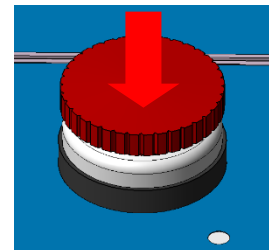


- When connecting the manual switch, make sure that the jack D (groove and arrangement of the contacts) is positively locked in order to avoid a defect in the control unit.

10.5 EMERGENCY OFF function

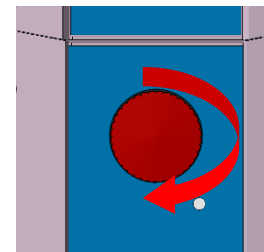
- Pressing the red **EMERGENCY STOP button** causes it to snap into place. The drive unit is interrupted and can no longer be operated with the manual switch. This is done in emergency situations and if the proper operation of the chair is disturbed.

Stop



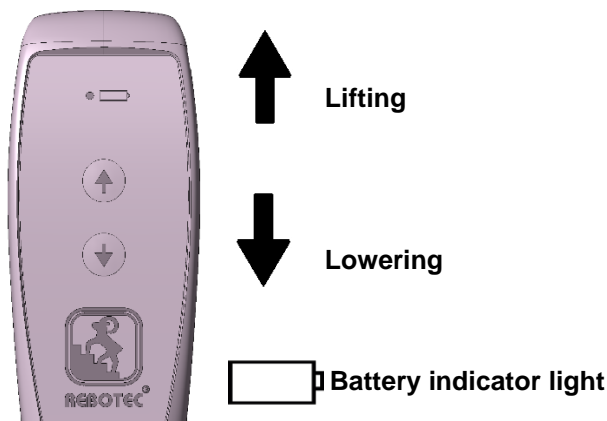
- Turning the **EMERGENCY STOP button** clockwise releases and unlocks it. The drive unit can then be operated again using the manual switch.

Start



10.6 Manual switch

- The manual switch is used to activate the drive unit (smooth and variable adjustment) and activates the 'lifting' and 'lowering' of the chair.
- The switch should be held down during the respective operation. When the button is released, the drive stops. The system stops automatically when the upper or lower end position is reached.



- The indicator light (LED) on the top of the manual switch indicates the state of charge of the batteries.

Display

LED-off:

- Battery capacity sufficient

LED-orange:

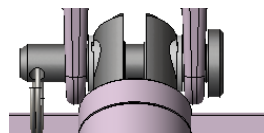
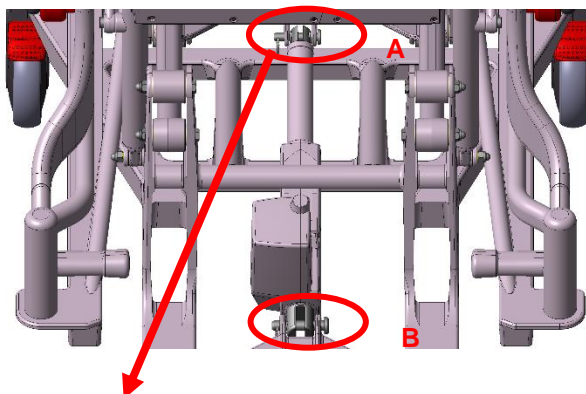
- If the LED lights up orange when the manual switch is operated, the battery capacity is too low. The battery needs to be charged soon!

Signal sound

- In addition to the indicator light on the manual switch, a signal sounds when the battery capacity is too low.

10.7 Linear drive

- The linear drive generates a noise level of 48 dB in a load-free condition. It is connected to the frame at two points (A & B) with a bolt and key ring.



For more information about the electrical elements, refer to the LINAK assembly instructions. See point 1.2

11 Product information

- We reserve the right to make technical developments and improvements with respect to the design shown in this user manual.
- See 16.

Field	Value
Phoenix / 352.XX.10	
Product weight*	53.6 kg
Total weight*	61.2 kg
Phoenix / 352.XX.40	
Product weight*	53.0 kg
Total weight*	60.6 kg
Skin sensitivity	DIN EN 10993-1/-5
Flammability**	DIN EN 1021-1/-2

*Without accessories.

**Flame retardant: For products made of PUR material.

12 Operation of the product

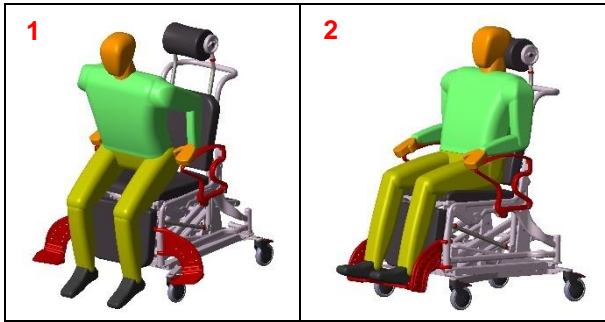


Attention: Danger of falling!

- Before use, it must be ensured that the chair is in a proper and safe state of use.
- If necessary, depending on the patient's limitations (adequate mobility and muscle strength), sitting down and getting up must be done with the help of a caregiver. Subsequent adjustments may only be made by qualified personnel!

12.1 Sitting down

- Before sitting down, make sure that the chair is secure against slipping and tipping over, that **at least two wheels are braked**, that **both armrests** are properly engaged, that the seats are firmly in place, and that the footrests are folded to the side or up. (height adjustment at the lower end position)



- The patient must position themselves as close as possible to the product. By supporting themselves on the two armrests, the patient should slowly sit down on the cushion. If this is not possible due to their physical limitations, support must be provided by the nursing staff.
- If the support cannot be adequately ensured, the use of patient lifters may be appropriate.

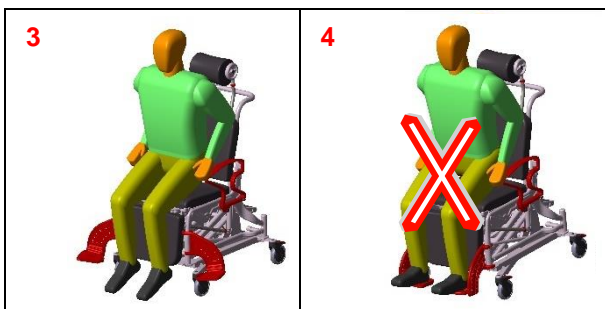


Caution: risk of falling!

- Avoid slumping down on the chair seat. The patient should sit on the full chair surface, if possible, and not only on the edge of the seat.
- When transporting people, the entire surface of the backrest and the footrests must be used if possible.

12.2 Getting up

- Before getting up, make sure that the chair is secure against slipping away and tipping over, that **at least two wheels are braked**, that **both armrests** are properly engaged, that the footrests are folded away or up sideways and that the patient is sitting upright (height adjustment in lower end position).
- The patient should move forward on the chair surface until his/her feet are on the floor.



- The patient must support themselves with their arms on the armrests and slowly rise from the seat. The patient must not his/her your body too far forward to avoid a potential risk of falling.
- The patient should be helped to stand up by the nursing staff.



Caution: risk of falling!

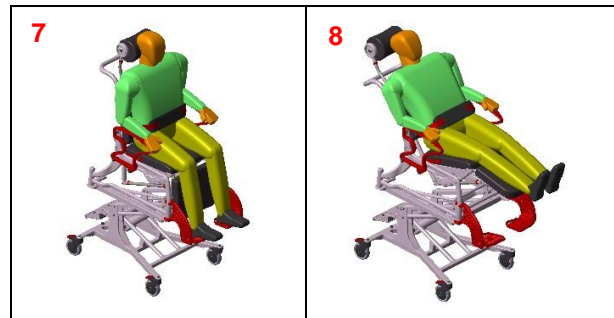
- The patient must never use the footrests to support his/her weight when sitting down or getting up (getting into and leaving the chair).

12.3 Sitting and lying in the lower position



- Lap belt (322.30.10)
- Before making any changes to the chair's inclination, first fasten the lap belt (see also point 9.7 on page 8). In addition, at least two wheels must be braked beforehand (point 11.5, Figure 1).

12.4 Sitting / lying during lifting



- If the patient is to be raised with the lift mechanism, **at least 2 parking brakes** must be applied before lifting. The lap belt must be used in both the sitting and lying position in order to additionally secure the patient.
- Care must be taken that the clamping lever for tilt adjustment is locked before the lifting operation.



Caution-tipping danger!

- The tilt adjustment should not be used in the extended state. There is a risk of tipping.
- The patient should never be left unattended in the chair at any time.
- Moving the chair in the raised state, with patients, is not permitted for safety reasons! Check that the chair is in the lower position before releasing the brakes.

12.5 Removing the seats

- The seat, the leg rest and the back pad can be removed from their locking position on the chair frame for cleaning purposes or for replacement (see description, page 2).

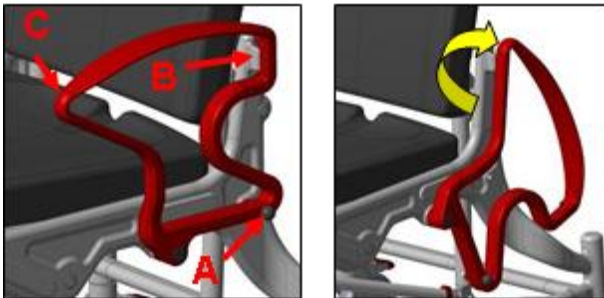
12.6 Folding down the footrests

- Swivel the footrests upwards and then lift the footrest out of the latch. The footrest can now be folded back.



12.7 Swivelling down the armrests

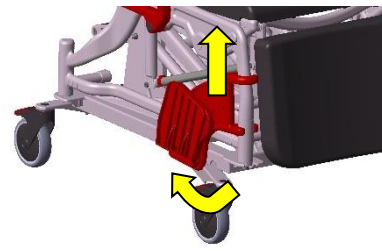
- Pulling out the locking bolts (A) releases the locking mechanism and the armrests can be swivelled backwards. When folding up the armrest, check that the catch on the backrest (B) and the locking bolt (A) are seated correctly.
- The armrests are to be swivelled with both hands.
- To do this, keep the locking bolt (A) pulled during the entire swivelling process and guide the armrest to point (C) with the other hand. Only touch the outer area and do not reach into or through the armrest.



- Check the locking mechanism at regular intervals, as possible limescale deposits on the locking mechanism can impair function and smooth operation.

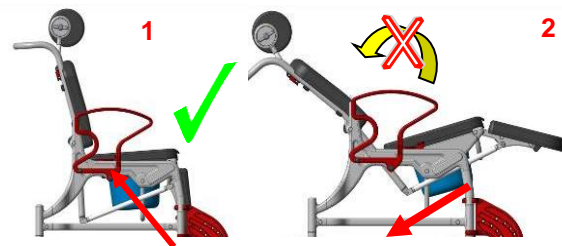
12.8 Removing the footrests

- Raise the footrest by approx. 100 mm and turn it outwards by 90 degrees. Now you can push the footrest all the way up and pull it out.



12.9 Using the toilet bucket

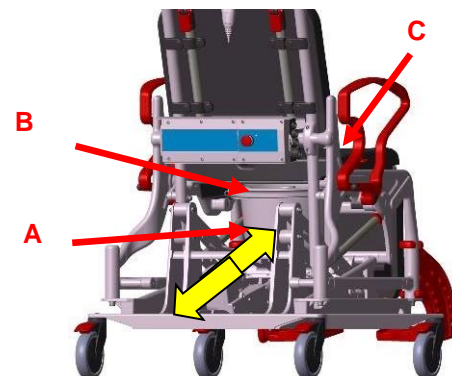
- When using the chair (PU) with a toilet bucket, it is only possible to use it in the sitting position (1) and not in the lying position (2), otherwise the toilet bucket will fall!
- Observe the information sticker on the side frame of the chair, in the area of the armrest.



Attention!
Remove the bucket before tilting.

12.10 Handling

- From the back of the chair, slide the toilet bucket (A) under the seat – remove the toilet lid (B) before installing the bucket. To remove, slightly lift the toilet bucket and then pull it out backwards.
- The armrests must be locked to prevent the patient from falling out. After removing the toilet bucket, put the seat cushion (C) back onto the shower seat.



- A stable position with no risk of slipping or tipping over must be ensured.

13 Troubleshooting

13.1 General

Fault	Possible cause	Remedy
Armrest cannot be swivelled down	Deposits in the locking device (locking bolt)	Cleaning, regular checking
Locking bolt cannot be pulled out	Deposits, tension spring jammed or defective	Cleaning, replacing the locking bolt
Footrest cannot be folded down	Deposits in the joint, bracing	Cleaning, checking screw connection
Wheel lock does not brake	General defect	see maintenance!
The wheel is stiff	Deposits	Cleaning
Wheel does not turn	General defect	see maintenance!
Wheel runs unevenly	Severe uneven tread wear	see maintenance!
Chair frame too unstable	Screw connections too loose	Screw connections: Tighten frame, wheel inserts
Wheel insert bent	Hitting an obstacle	see maintenance!
Tilt adjustment lever not working	Jammed, broken, deposits, screw connection too loose or tight.	Checking, Maintenance
Tilt adjustment not working	Functional defect	Checking, maintenance
Headrest adjustment not working	Functional defect	Checking, Maintenance

13.2 Drive unit faults

- For information on faults and troubleshooting of the electronics, refer to the LINAK GmbH assembly instructions. See point 1.2.

14 Cleaning & disinfection

14.1 General

- The product is suitable for machine cleaning and disinfection. Please observe the reprocessing instructions (02.12.158).
 - Only the bucket can be cleaned and disinfected by machine.
- Observe the protection classes of the electronic components.
- Do not use hard objects such as scrapers, wire brushes, or metal sponges.

- Observe infection control. Disinfect the product before reuse.
- Do not mix different cleaning and disinfectant products.

14.2 Cleaning

- Gross contamination must be removed immediately after use.
- The seat pad, seat, leg pad and bucket must be removed before cleaning.
 - They must be cleaned and dried separately.
- Use only commercially available detergents with a pH of 5-9.
- Note the mixing ratio information.
- Allow the detergent to act as specified by the manufacturer.
- Remove the cleaning agent without leaving any residue.
- After cleaning, wipe the product with a damp cloth.
- Dry the product with a cloth after cleaning. The product may only be used in a dry state.

Exclusions:

- Cleaning agents must not contain chlorine or strong acids.
- Do not use cleaners with added abrasive.
- Do not use a pressure washer

14.3 Disinfection

- The product is not intended for steam or hot air sterilisation. Observe the operating temperatures (2.2).
- Use only surface disinfectants tested and recognised by the Robert Koch Institute.
 - Permissible agents are those based on (form)aldehyde or alcohol.
- Observe the material approvals of disinfectant manufacturers. The product consists of the following components or materials:
 - Polyamide: Frame, armrests, footrests
 - Polyurethane: Seat, backrest, leg rest, headrest
 - Polypropylene: Bucket & holder
 - Polythene: Nameplate
 - Aluminium: Tubes
 - Stainless steel: Screws, washers. Nuts
- Note the mixing ratio information.

- Observe the safety instructions from the disinfectant manufacturer.
- Apply the disinfectant by spraying or rubbing over the surface.
- Leave the agent to take effect. Observe the indicated exposure times.
- Depending on the disinfectant, a subsequent wiping with warm water may be necessary.
- Remove the disinfectant without leaving any residue.

Exclusions:

- Do not use any alcohol-based products in the area of stickers and nameplates.
- Cleaning agents must not contain chlorine or strong acids.

15 Maintenance

- Wear and tear that is not recognised in time and/or improper handling, as well as irregular or no maintenance may result in accidents.



*For safety reasons, the product must be professionally maintained **at least once a year**.*

- Regular safety checks are required:
 - Check the product and accessories for visible damage (cracks, breaks, loose parts)
 - Check stability before use
 - All screw connections for tightness
 - Function of the armrests and locking bolts
 - Function of the headrest
 - Running characteristics and tread of the wheels (replace defective wheels)
 - Function of the parking brakes.
 - Function of the headrest

- Function of the tilt adjustment

- If you have any questions concerning the maintenance of the product, please contact an authorised dealer or a medical and healthcare supplies store. In the event of damage or a need for repairs, contact your specialist dealer immediately.
- Do **not** make **any** unauthorised changes to the article. This may affect the safety and function of the item. **In such cases, REBOTEC will not assume any liability.**
- Only use the manufacturer's spare parts for repairs. See 0.
- After maintenance or repair work has been carried out, we recommend you clean the product before using it again.
- Please note points 0 and 7.
- *Please observe the maintenance instructions (number*).*

15.1 Maintenance of the electronic system

- Regular safety checks are required:
 - Cabling check
 - Check the state of charge before every start-up
 - Periodically inspect the ventilation openings in the batteries.
 - Charge the battery modules regularly.
- In case of any issues, do not put the unit into operation or carry out repairs on your own.
 - To do this, contact your local specialist dealer or **REBOTEC**.



Caution: There is a risk of injury due to slipping and clamping!



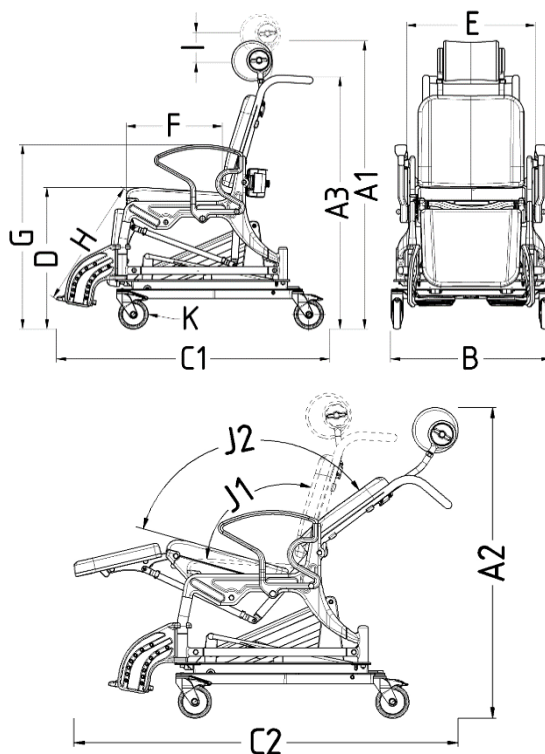
Spare parts & accessories

No.	Prod. no.	Designation
1	301...	Toilet bucket with lid
2	322.30.20	Safety belt size M/L
3	422.00.75	Wall-mounted charging station incl. battery and cable
4	422.00.80	Linear drive
5	422.00.82	Control unit
6	422.00.84	Manual switch
7	422.00.85	Wall charger EU charger cable
8	422.00.86	Rechargeable battery unit 24 V
9	440.10.14	PUR shower seat incl. bucket holder
10	440....62	PUR shower seat padding
11	443.10.90	Wheel 125 total brake
12	447....57	Left footrest, height-adjustable
13	447....59	Right footrest, height-adjustable
14	450.10.05	Armrest lock, complete
15	450.10.16	PUR – Back pads, black
16	450.10.17	PUR – Leg rest, black
17	450.10.58	Headrest, standard
18	450.10.59	Headrest, comfort
19	302.00	Toilet bowl for PUR shower seat with hygienic cut
20	440.00.93	Infusion stand for Phoenix
21	440.10.32	PUR armrest pad
22	440.10.40	PUR – Splash protection for PUR shower seat
23	322.30.10	Safety belt size S.
24	322.10.50	Safety belt slide-on pad
25	322.30.99	Set, safety belts for Phoenix incl. slide-on pads



Use only REBOTEC spare parts and accessories to ensure the proper and safe functioning of the product.

16 Drawing & dimensions



No.	Designation	Phoenix
a1	Overall height	1230 mm
a2	Overall height	1110 mm
a3	Handlebar height	1060 mm
b	Overall width	650 mm
c1	Overall depth	1110 mm
c2	Overall depth	1435 mm
d	Seat height	570 mm
	Seat width	450 mm
e	Width between armrests	540 mm
f	Seat depth	430 mm
g	Height to armrests	760 mm
h	Footrest knee height min.	440 mm
	Footrest knee height max.	520 mm
i	Headrest height	120 mm
j1	Seat angle	103°
j2	Reclining angle	128°
k	Front wheel diameter	125 mm
	Rear wheel diameter	125 mm
-	Lift/height adjustment	400 mm

Dimensions and weights may vary depending on the equipment. There might be minor deviations due to production tolerances. Subject to change without notice.





EN



REBOTEC® Rehabilitationsmittel GmbH

D-49610 Quakenbrück, Artlandstr. 57-59

Phone: +49 (0) 5431/9416-0

Fax: +49 (0) 5431/9416-66

Web: www.rebotec.de

Email: info@rebotec.de



Read this User Manual **before using the product for the first time** and keep it at hand for the user as well as for future use and provide it to the purchaser in the case of subsequent sales.